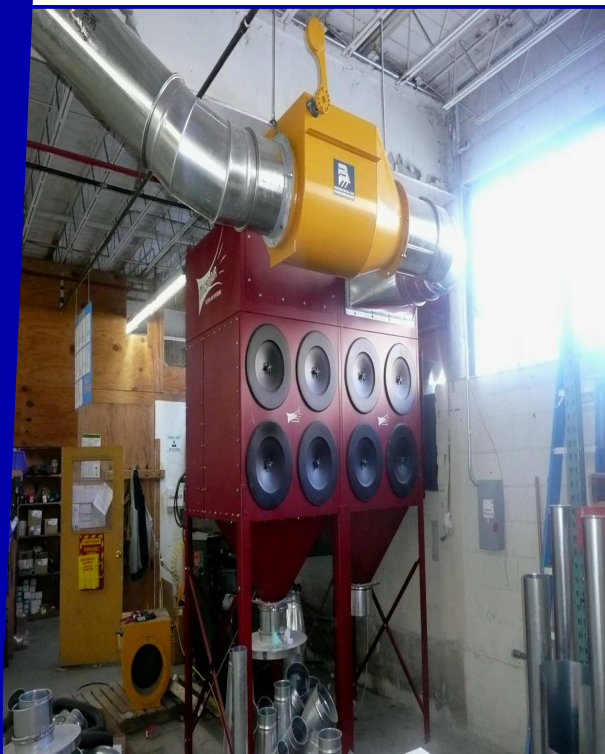


626 Main St.
Somers, CT 06071
Phone: 860-749-3938
Fax: 860-749-9913
Ryan Thibodeau
Account Manager
rthib@questcorp.com



**"QUALITY IS
CONFORMANCE
-TO-
CUSTOMER
REQUIREMENTS"**

DESIGN • ENGINEERING • SALES • INSTALLATION • SERVICE



NUTMEG CONTAINER — PUTNAM, CT

Nutmeg Container, located in Putnam, Connecticut, is renowned for their custom packaging. During the fall of 2010, Nutmeg had decided that they needed to solve a dust issue that had been effecting their operation. After a competitive bid process, Aquest Corporation was awarded the job of minimizing their dust load. There were three main process areas that were targeted by Aquest's engineering team to be the sources of dust promulgation. Aquest and their main principle, Micro Air, teamed up to develop an aggressive dust abatement strategy to significantly lower dust levels and to meet OSHA and NFPA regulations and guidelines. Aquest's ability to think outside the box and maximize the space inside Nutmeg's facility provided the customer with a cost-effective solution to a problem that was large in scope. Aquest Corporation installed dust collectors in three process locations throughout the factory. The picture to the left is of a Micro Air RP4-2 which was designed to collect dust generated by machines in the wood shop. The picture at the top left is of a Micro Air RP8 which was designed to capture ambient dust created from the cyclone, shredder and band saw operations in their bailing process. The picture at the top right is of a RP4-3 which was designed to capture dust created from a CNC Holzma and router machine. Aquest's quality engineering team positioned the units accordingly to allow the use of deflagration panels, secondary explosion dampers, and spark detection and suppression on every dust collector. Aquest provided a complete turnkey installation and system start-up

WWW.AQUESTCORP.COM